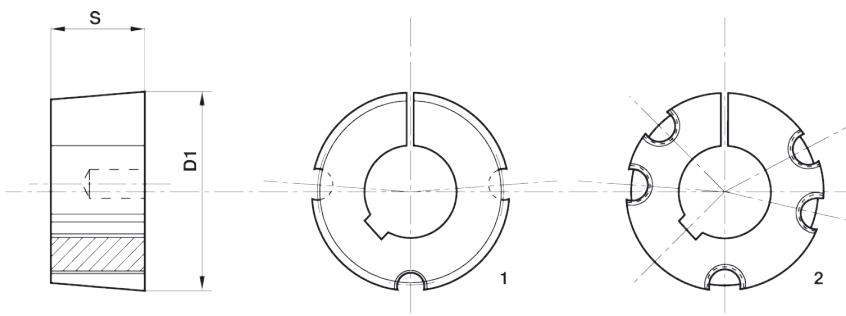
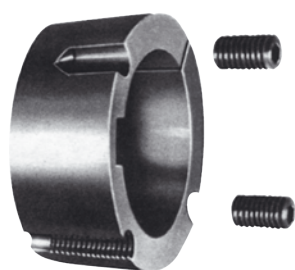


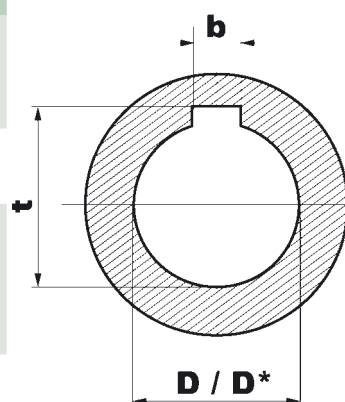
Taperbøsninger



Materiale: Støbejern

Bøsning	Boring							Tilspændingsmoment Nm	Skrue	D1	Type	S	Skridmoment Nm (min)													
	* reduceret nothøjde - se tabel 2																									
1008	9	10	11	12	14	16	18	19	20	22	24	25	5,6	1/4" x 1/2"	35,0	1	22,3	29								
1108	9	10	11	12	14	16	18	19	20	22	24	25	28*	5,6	1/4" x 1/2"	38,0	1	22,3	28							
1210	11	12	14	16	18	19	20	22	24	25	28	30	32	20	3/8" x 5/8"	47,5	1	25,4	82							
1215	14	19	20	24	25	28	20	3/8" x 5/8"	47,5	1	38,1	82														
1610	14	16	18	19	20	22	24	25	28	30	32	35	38	40*	42*	20	3/8" x 5/8"	57,0	1	25,4	98					
1615	14	16	18	19	20	22	24	25	28	30	32	35	38	40*	42*	20	3/8" x 5/8"	57,0	1	38,1	98					
2012	14	16	18	19	20	22	24	25	28	30	32	35	38	40	42	45	48	50*	30	7/16" x 7/8"	70,0	1	31,8	165		
2517	16	18	19	20	22	24	25	28	30	32	35	38	40	42	45	48	50	55	60	65*	50	1/2" x 1"	85,5	1	44,5	220
3020	25	28	30	32	35	38	40	42	45	48	50	55	60	65	70	75	90	5/8" x 1 1/4"	108,0	1	50,8	520				
3030	35	38	40	42	45	48	50	55	60	65	70	75	90	5/8" x 1 1/2"	108,0	1	76,2	520								
3525	35	38	40	42	45	48	50	55	60	65	70	75	80	115	1/2" x 1 1/2"	127,0	2	64,9	1000							
3535	35	38	40	42	45	48	50	60	65	70	75	80	85	90*	115	1/2" x 1 1/2"	127,0	2	88,9	1000						
4030	40	42	45	48	50	55	60	65	70	75	80	85	90	100*	170	5/8" x 1 3/4"	146,0	2	76,2	1700						
4040	40	42	45	48	50	55	60	65	70	75	80	85	90	100*	170	5/8" x 1 3/4"	146,0	2	101,6	1700						
4545	55	60	65	70	75	80	85	90	100*	190	3/4" x 2"	162,0	2	115,0	2500											
5050	70	75	80	85	90	100	105	110	115	120	125	270	7/8" x 2 1/4"	177,6	2	127,0	3950									

D	b Js9	t
Over 10 til 12	4	D+1,8
- 12 - 17	5 ±0,015	D+2,3
- 17 - 22	6	D+2,8
- 22 - 30	8 ±0,018	D+3,3
- 30 - 38	10	D+3,3
- 38 - 44	12 ±0,021	D+3,8
- 44 - 50	14	D+4,3
- 50 - 58	16	D+4,4
- 58 - 65	18	D+4,4
- 65 - 75	20 ±0,026	D+4,9
- 75 - 85	22	D+5,4
- 85 - 95	25	D+5,4
- 95 - 110	28	D+6,4
- 110 - 130	32 ±0,031	D+7,4



Tabel 2 - * Reduceret nothøjde

D*	b	t
28*	8	D+1,3
35*	10	D+1,3
40*/42*	12	D+1,3
50*	14	D+2,8
65*	18	D+2,8
90*	25	D+3,4
100*	28	D+5,4